



## Milner Lane

Saxton, Tadcaster , LS24 9QG  
£700,000



# SIGNATURE

BY

**Emsleys** | estate agents

# Milner Lane

Saxton, Tadcaster, LS24 9QG

\*\*\* STUNNING VILLAGE LOCATION \* COUNTRYSIDE VIEWS \* FAMILY HOME WITH ANNEXE.\*\*\*

A rare opportunity has arisen to purchase this attractive Yorkshire Stone built home which is surrounded by stunning countryside views, in one of the most idyllic settings locally there is to offer and set on just over a 1/4 acre plot. Having electric sweeping gates with a walled boundary to two sides and sweeping driveway providing ample parking and leading up to the property and double garage.

The property offers flexible living with two sections. A spacious home and a one bedroom fully functional Annexe flat.

The main property briefly comprises: a modernised entrance hall with doors leading to the downstairs modern WC, 29 ft lounge and kitchen/diner having a newly fitted modern kitchen opening to a dining area. From the kitchen/diner there is also a utility area and study. The first floor comprises three generous sized bedrooms and a modern four piece bath/shower room.

The Annexe can be accessed via the main house in between the dining area and utility with a front entrance door but there is also a private external entrance leading to this first floor apartment. The open feel of this apartment with dual aspect windows over the countryside provides space and light to this attractive addition. The spacious lounge opens to a study landing, door to a double bedroom and a four piece bath/shower room, plus a modern fitted breakfast kitchen, again with outstanding hillside views.

Outside, because of the position, the property benefits from stunning views all around. The garden is laid mainly with a lawn to the front and a side seating area, ensuring privacy. Having a large integral double garage and workshop giving ample versatility to most potential buyers.

Within easy access of amenities and motorway links. Call now 24 hours a day, 7 days a week to arrange your viewing.

- STUNNING LOCATION
- BEAUTIFUL THROUGHOUT
- FAMILY HOME WITH ANNEXE
- SET ON APPROX. 1/4 ACRE PLOT
- DOUBLE GARAGE & WORKSHOP
- SURROUNDED BY COUNTRYSIDE
- EASY ACCESS TO AMENITIES & MOTORWAY LINKS
- EPC Rating E
- Council Tax Band E



## Ground Floor

### Hall

Composite entrance door, stairs to the first floor, radiator, PVCu double-glazed windows to the front and side aspects, door to the lounge and a door to the WC.

### WC

Modern, hidden cistern push flush WC, hand wash basin with mixer tap, tiled floor, radiator and a window to the side aspect.

### Kitchen/Diner

8'0" x 24'10" (2.44m x 7.57m)

Fitted with a range of wall and base units with co-ordinating work surfaces. Stainless steel sink and drainer with mixer tap, four ring induction hob and double oven, integrated microwave, fridge/freezer and a dishwasher. Down lighters to the ceiling, radiator, two PVCu double-glazed windows to the front aspect and doors to the hall and garage.

### Lounge

13'10" x 29'0" (4.22m x 8.84m)

Stone fireplace with a multi-fuel burner, exposed beams to the ceiling, two radiators and two sliding doors and an access door to the conservatory.

### Conservatory

9'8" x 22'5" (2.95m x 6.83m)

Outstanding country views with a door to the side.

### Entrance

Composite door to the front. Stairs to the first floor annexe with a white banister, radiator and a door to the kitchen/diner and utility.

### Utility

7'8" x 5'0" (2.34m x 1.52m)

Fitted with wall and base units, work surfaces, down lighters, PVCu double-glazed window to the front aspect and a door to the study.

### Study

8'0" x 7'8" (2.44m x 2.33m)

Water tank store, radiator, tiled floor, down lighters and a PVCu double-glazed window to the side aspect.

### Double Garage

Electric up-and-over door, power and lighting, workshop to the side, window and personal door.

## First floor

### Landing

Storage cupboard, wood flooring, PVCu double-glazed window to the front aspect and doors leading to the bedrooms and house bathroom.

### Bedroom

13'10" x 13'10" (4.22m x 4.22m)

Fitted wardrobes inset to the alcove, radiator and a PVCu double-glazed window to the rear aspect with outstanding countryside views.

### Bedroom

13'10" x 11'10" (4.22m x 3.61m)

Radiator, hatch to the loft and a PVCu double-glazed window to the rear with countryside views.

### Bedroom

8'6" x 9'1" (2.59m x 2.77m)

PVCu double glazed windows to the front and side aspects and a radiator.

### Bathroom

Comprising a four piece suite with a straight panelled bath, wet area with a 'rain head' shower, vanity unit with wash hand basin and a low level push flush WC. Built-in linen cupboard, heated towel rail, tiled floor, downlighters, extractor and a PVCu double-glazed frosted window.

## Annexe

### Annexe Lounge

13'3" x 15'11" (4.03m x 4.85m)

Wood flooring, TV Point, radiator, PVCu double-glazed window to the rear aspect with stunning views and doors to the bedroom, bathroom and kitchen.

### Annexe Kitchen

18'10" x 6'9" (5.74m x 2.06m)

Fitted with a range of wall and base units with complementary work surfaces and a ceramic sink unit and drainer with mixer tap. 'Lamona' 4 ring induction hob, extractor hood, built-in single oven, integrated washing machine, tumble dryer, fridge/freezer and dishwasher. Tiled floor, radiator and PVCu double-glazed windows to the front, side and rear aspects.

## Annexe Bedroom

12'8" x 11'9" (3.86m x 3.58m)

Fitted wardrobes with sliding doors, wood flooring, radiator and PVCu double-glazed window to the front aspect with countryside views.

## Annexe Bathroom

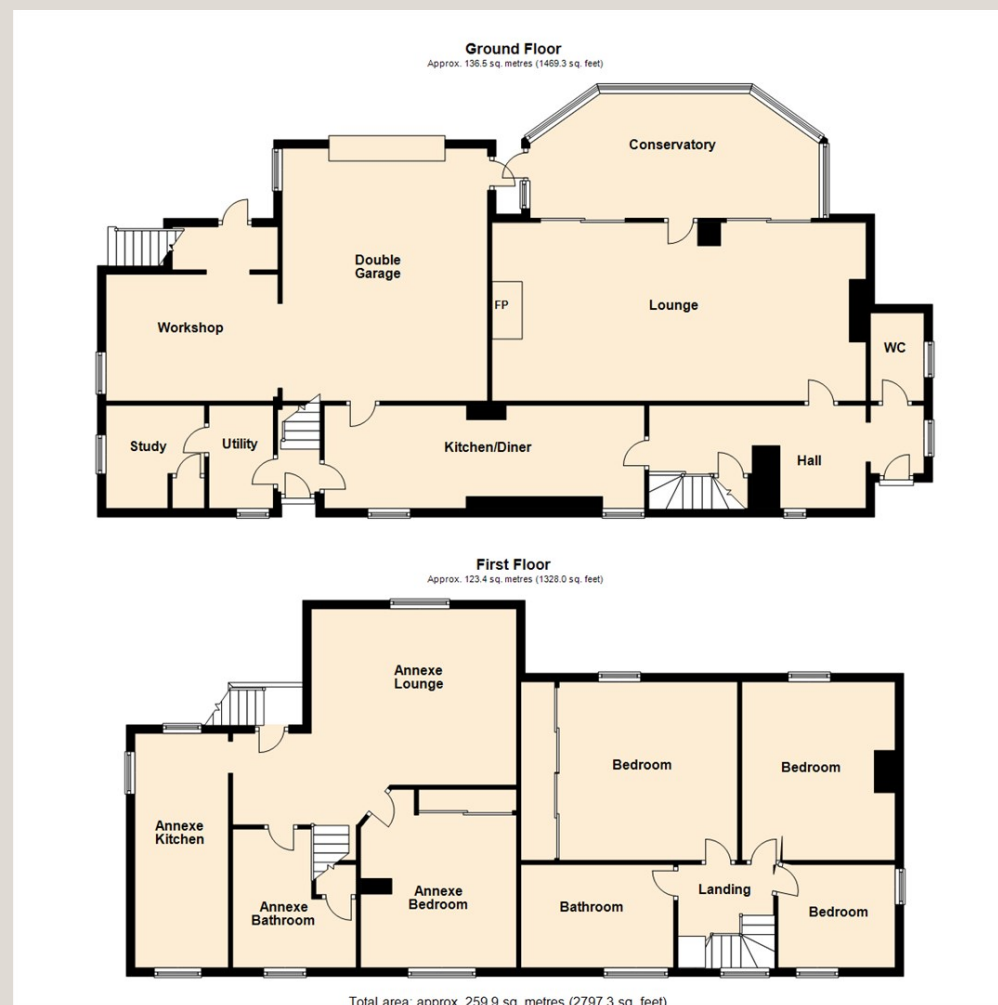
A four piece suite with a 'jet spa' bath, a wet area with a 'rain fall' shower head, vanity unit with a wash hand basin and a low level push flush WC. Built-in linen cupboard and a heated towel rail.

## Exterior

Because of the position, the property benefits from stunning views all around. The garden is laid mainly with lawn to the front with a side seating area, ensuring privacy. A purpose built storage unit is enclosed by a walled pen at the top of the garden, this is useful for those who work from home for storage. Accessed by electric gates with Yorkshire stone wall boundaries, 3 outside water taps a long drive way and parking for multiple cars.







6 Main Street, Garforth  
Leeds LS25 1EZ  
t. 0113 286 4000  
e. garforth@emsleysestateagents.co.uk

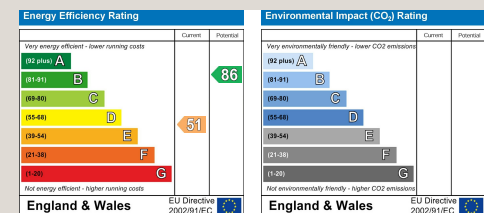
35 Austhorpe Road, Crossgates  
Leeds LS15 8BA  
t. 0113 284 0120  
e. crossgates@emsleysestateagents.co.uk

4 Wolsey Parade,  
Sherburn in Elmet LS25 6BQ  
t. 01977 680 088  
e. sherburn@emsleysestateagents.co.uk

65 Commercial Street, Rothwell  
Leeds LS26 0QD  
t. 0113 201 4040  
e. rothwell@emsleysestateagents.co.uk

[www.emsleysestateagents.co.uk](http://www.emsleysestateagents.co.uk)

These details are for guidance only and complete accuracy cannot be guaranteed. If there is any point, which is of particular importance, verification should be obtained. They do not constitute a contract or part of a contract. All measurements are approximate. No guarantee can be given with regard to planning permissions or fitness for purpose. No apparatus, equipment, fixture or fitting has been tested. Items shown in photographs are NOT necessarily included. Interested Parties are advised to check availability and make an appointment to view before travelling to see a property.



SIGNATURE

BY Emsleys | estate agents